

# CENTER LINE SURVEY PLAT

GUE-77-4.77

JACKSON & CAMBRIDGE TWPS.  
 U.S.M.L. N<sup>o</sup> 485, SEC. N<sup>os</sup> 6 & 15, T.1, R.2, U.S.M.L.  
 U.S.M.L. N<sup>os</sup> 1, 2, 3, & 4, T.1, R.3, U.S.M.L.  
 GUERNSEY COUNTY



C. EDWIN HULTMAN CO. • Restoration of Public Records

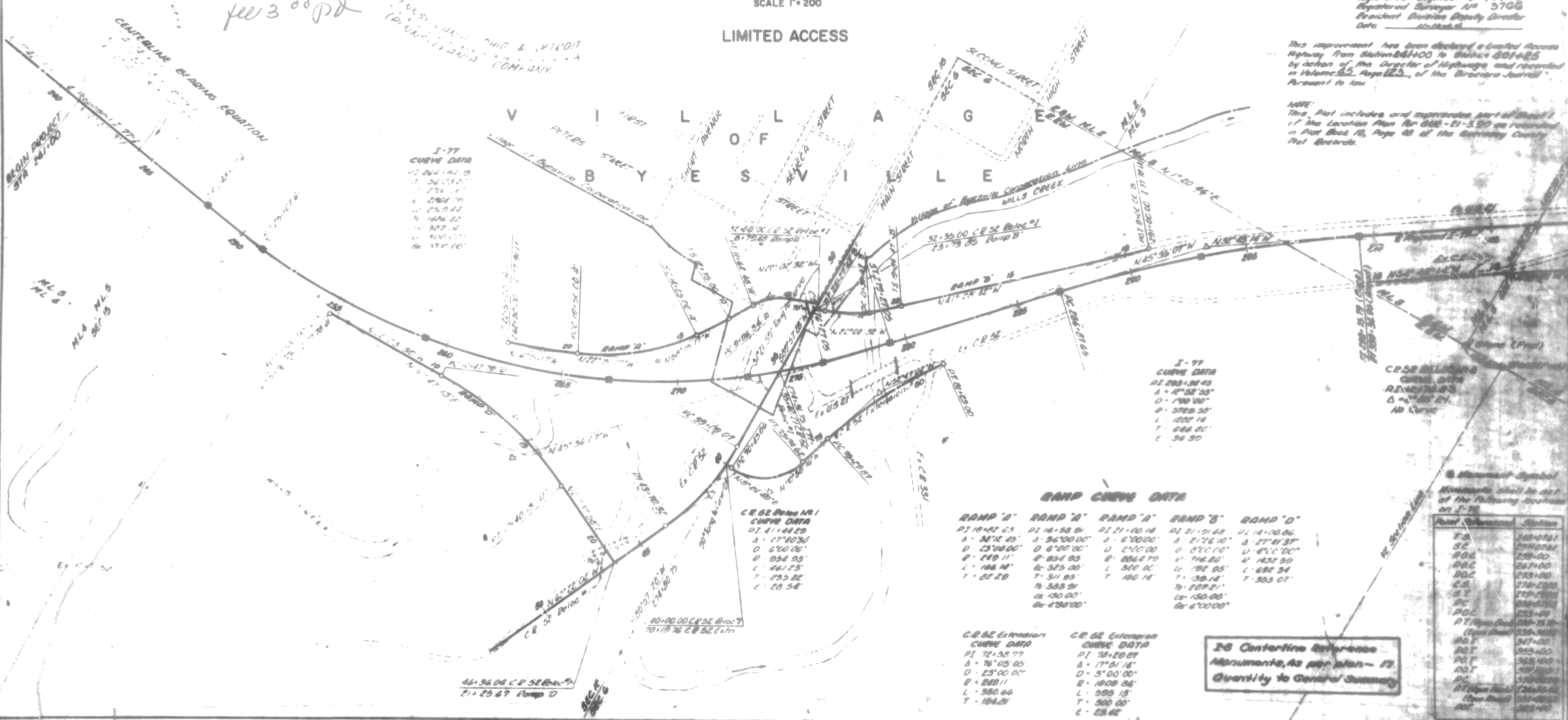
Filed *7* at *10* 19*65* At *10:30* M  
 Recorded *may 10* 19*65*  
 Vol. *11* Page *79*  
 JOHN W. CAMPBELL, Recorder  
 GUERNSEY COUNTY, OHIO

*fee 3<sup>00</sup> PD*



SCALE 1" = 200'

LIMITED ACCESS



**I-77 CURVE DATA**

PI	264.9215
A	36°15'21"
D	274.11
E	284.79
L	250.43
T	166.42
T	387.4
L	400.00
PC	194.10

**I-97 CURVE DATA**

PI	283.3845
A	4°32'35"
D	1700.00
E	3788.58
L	1022.18
T	686.80
L	36.50

**C.R. 52 RAMP A CURVE DATA**

PI	41.14129
A	27°40'30"
D	600.00
E	634.83
L	461.23
T	235.22
L	28.58

**RAMP CURVE DATA**

RAMP "A"	RAMP "B"	RAMP "C"	RAMP "D"	RAMP "E"
PI 18.1263	PI 18.5829	PI 21.0218	PI 21.0149	PI 18.0086
A 38°12'45"	A 36°00'00"	A 4°00'00"	A 2°26'10"	A 27°41'37"
D 2300.00	D 600.00	D 200.00	D 800.00	D 800.00
E 449.11	E 824.83	E 886.70	E 716.20	E 1432.50
L 166.14	L 325.00	L 300.00	L 192.05	L 682.34
T 82.29	T 311.95	T 150.14	T 135.14	T 303.07
	B 348.29		B 150.00	
	B 438.00		B 438.00	

**C.R. 52 Extension CURVE DATA**

PI	12.3277
A	76°03'00"
D	2500.00
E	2828.11
L	582.66
T	104.21

**C.R. 52 Extension CURVE DATA**

PI	18.2007
A	17°51'18"
D	500.00
E	1029.06
L	599.13
T	300.00
L	23.42

**26 Centerline Easements - 17' Quantity to Center Survey**

Point	Station
TS	188.4151
SC	270.0741
POC	287.00
POC	287.00
PC	272.00
CS	272.2500
SE	272.2500
PC	280.0000
POC	253.00
PT (Ramp A)	289.232
PT (Ramp B)	239.320
POI	247.00
POI	252.00
POI	262.00
POI	272.00
PC	272.00
PT (Ramp C)	272.00
PT (Ramp D)	272.00
POI	272.00

NOTE:  
 This instrument prepared by the Ohio Department of Highways under the supervision of  
 Registered Engineer No 14456  
 Registered Surveyor No 5706  
 President Division Deputy Director  
 Date 5/10/65

This improvement has been declared a Limited Access Highway from Station 261+00 to Station 281+425 by action of the Director of Highways and recorded in Volume 65, Page 123, of the Bureau Journal pursuant to law.

NOTE:  
 This Plat includes and supersedes part of Plat 1 of the Location Plan for GUE-21-5.97 as recorded in Plat Book 18, Page 48 of the Guernsey County Plat Records.